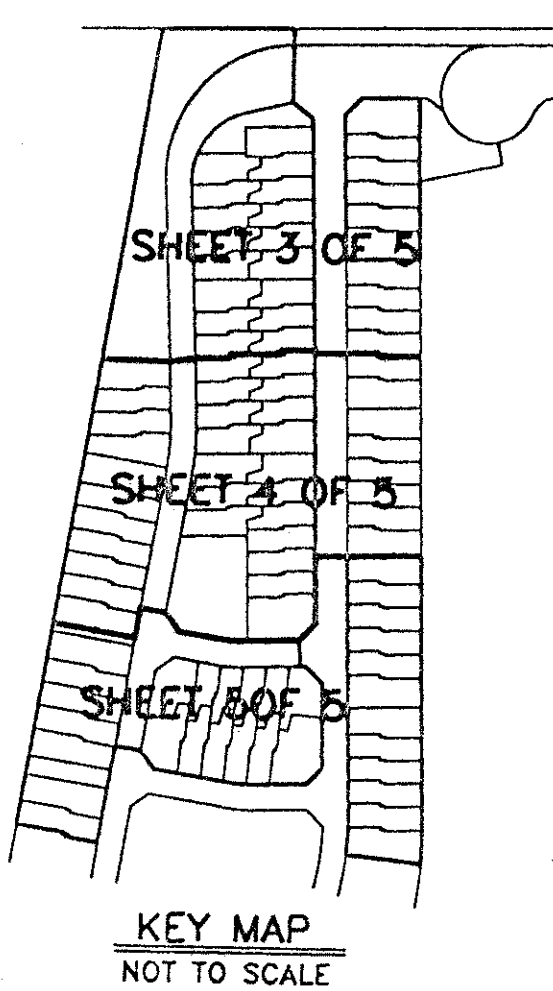


LAKE CHARLESTON TRACT "G" PLAT 2

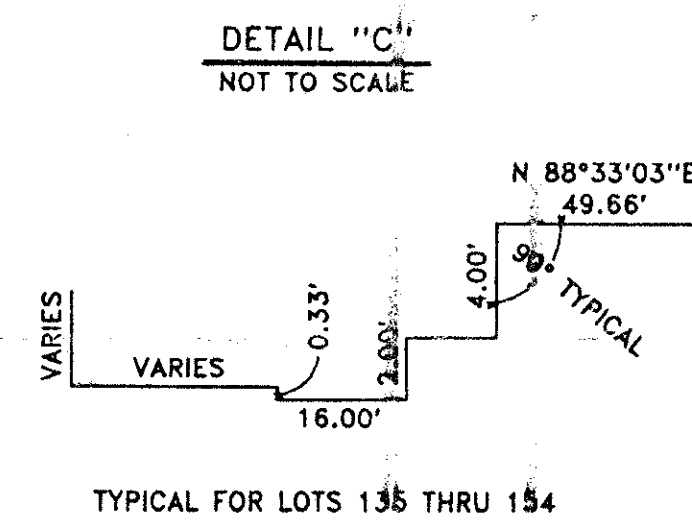
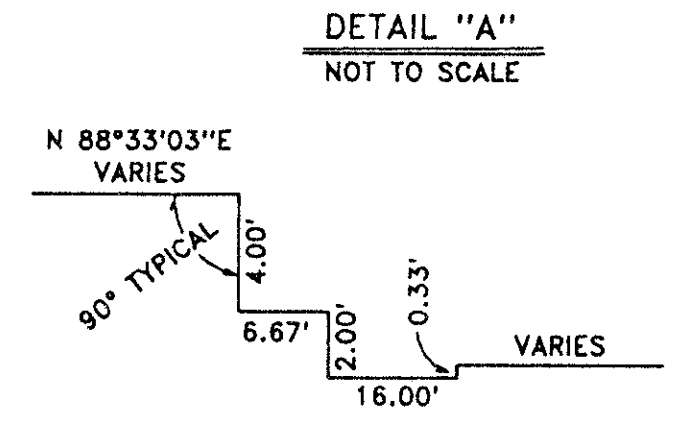
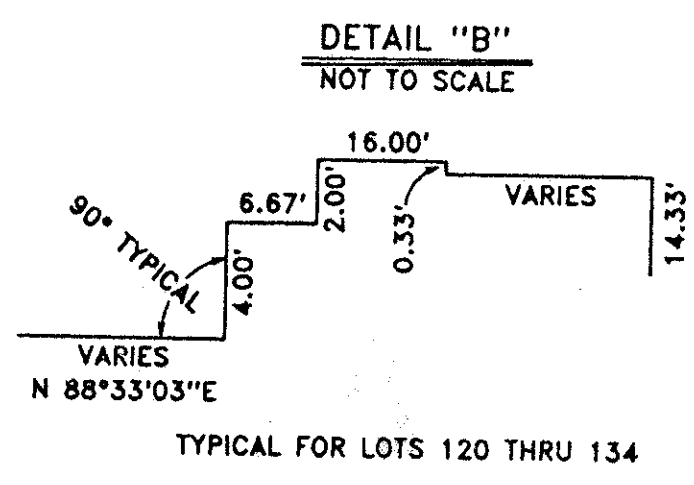
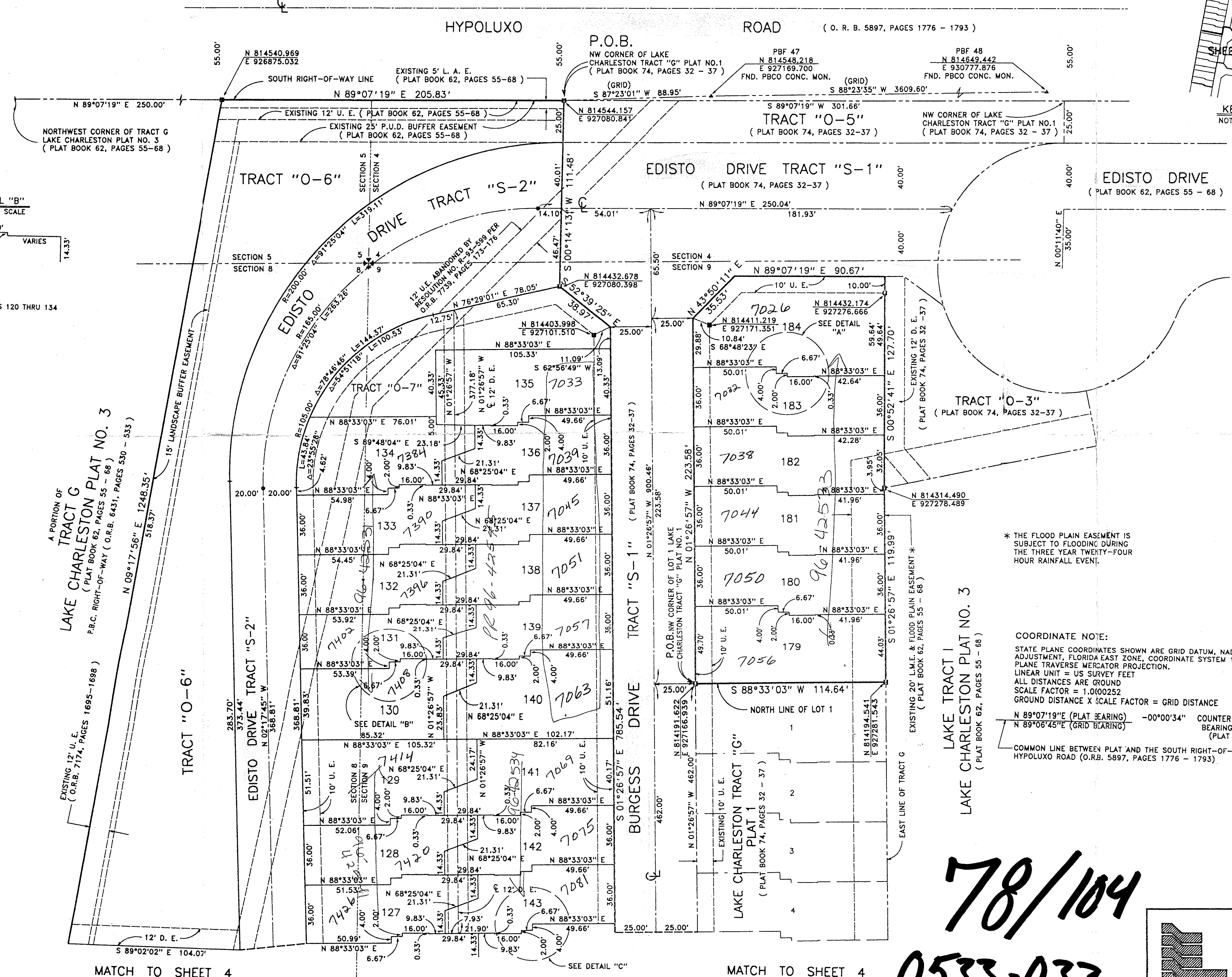
0533-033

104

A PART OF LAKE CHARLESTON PLANNED UNIT DEVELOPMENT
 BEING A REPLAT OF A PORTION OF TRACT G OF LAKE CHARLESTON PLAT NO.3 AS RECORDED
 IN PLAT BOOK 62, PAGES 55 THRU 68, PUBLIC RECORDS OF PALM BEACH COUNTY, FLORIDA
 LYING IN SECTIONS 4,5,8 AND 9, TOWNSHIP 45 SOUTH, RANGE 42 EAST
 SHEET 3 OF 5
 MARCH, 1995



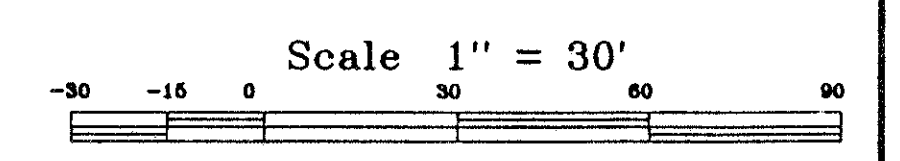
STATE OF FLORIDA
 COUNTY OF PALM BEACH
 This Plat was filed for record at _____
 M. This day of _____, 19____
 and duly recorded in Plat Book No. _____
 on Page _____
 Dorothy H. Wilken, Clerk of the Circuit Court
 By _____ D.C.



* THE FLOOD PLAIN EASEMENT IS SUBJECT TO FLOODING DURING THE THREE YEAR TWENTY-FOUR HOUR RAINFALL EVENT.

COORDINATE NOTE:
 STATE PLANE COORDINATES SHOWN ARE GRID DATUM, NAD 83 1990 ADJUSTMENT, FLORIDA EAST ZONE, COORDINATE SYSTEM 1983 STATE PLANE TRAVERSE MERCATOR PROJECTION.
 LINEAR UNIT = US SURVEY FEET
 ALL DISTANCES ARE GROUND
 SCALE FACTOR = 1.000252
 GROUND DISTANCE X SCALE FACTOR = GRID DISTANCE
 N 89°07'19"E (PLAT BEARING) -00°00'34" COUNTER CLOCKWISE BEARING ROTATION (PLAT TO GRID)
 N 89°06'45"E (GRID BEARING) BEARING ROTATION (PLAT TO GRID)
 COMMON LINE BETWEEN PLAT AND THE SOUTH RIGHT-OF-WAY LINE OF HYPOLUXO ROAD (O.R.B. 5897, PAGES 1776 - 1793).

Pet 78/104



THIS INSTRUMENT WAS PREPARED BY LESLIE BISPOTT UNDER THE SUPERVISION OF CRAIG S. PUSEY, PROFESSIONAL LAND SURVEYOR AND MAPPER OF LANDMARK SURVEYING & MAPPING, INC.

Landmark Surveying & Mapping Inc.
 1850 FOREST HILL BOULEVARD
 PH. (407)433-5405 SUITE 100 W.P.B. FLORIDA
LAKE CHARLESTON TRACT "G" PLAT 2

SUBDIVISION * LAKE CHARLESTON
 BOOK 78
 FLOOD ZONE B
 QUAD # 49
 SE 86-96
 PUD NAME LAKE CHARLESTON
 PAGE 104
 FLOOD MAP #170A
 ZONING RTS
 ZIP CODE 33467

Recorded 1/97

TAL 438

78/104
0533-033

MATCH TO SHEET 4

MATCH TO SHEET 4